



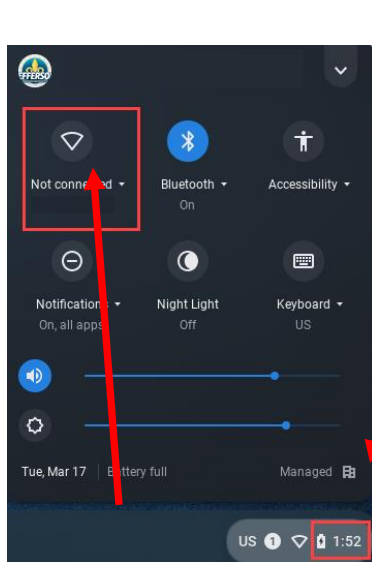
Connecting a Chromebook to Home Internet Service

Purpose

This document will provide steps to connect a Chromebook to a home Internet (Wi-Fi) service. A working Internet connection is required to log into a Chromebook.

Procedure

1. Turn on the JPS Chromebook. When the login screen appears, **do not attempt to log in.**
2. At the bottom right of the screen, click on the time.

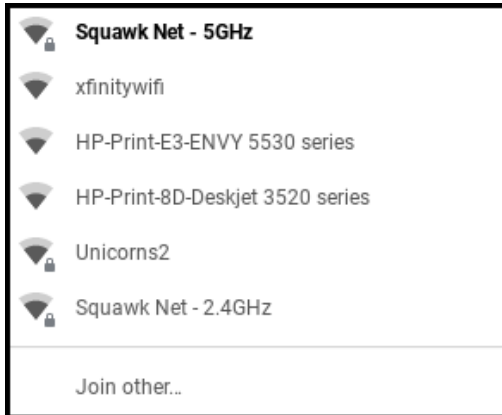


3. Select *Not connected*. The Chromebook Internet will turn on automatically if it is turned off.
4. The Chromebook will show a list of available internet networks. Select your home Internet (Wi-Fi) network from list (example list below).

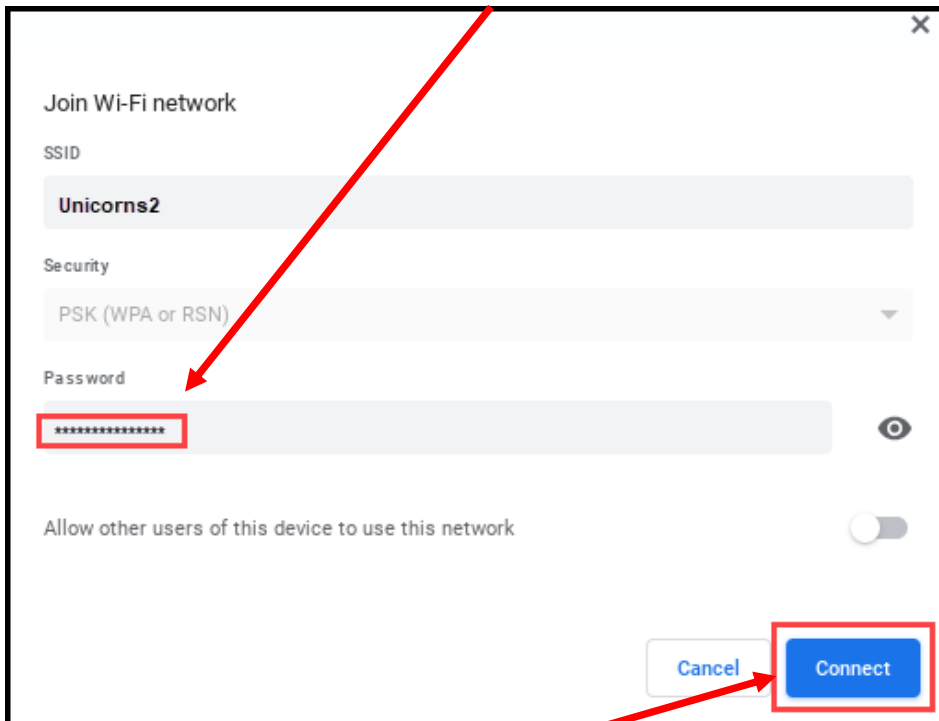


Connecting a Chromebook to Home Internet Service

5.



6. Type the Internet (Wi-Fi) network password.



7. Click on the *Connect* button.

Once the Chromebook has successfully connected to the Internet (Wi-Fi), you can log into your Chromebook with your JPS username and password.